

Co-sponsoring:

- Litchfield Area Hospice
- Pregnancy & Infant Loss Support Group
- Johnson-Hagglund Funeral Home and Cremation Services
- Dianne Cannon - Clothing, etc.
- Troy & Sarah Atkinson Family
- Litchfield Floral
- Monica & Ron Schreiber Family
- March of Dimes - Team for Hope & Holly



MEEKER MEMORIAL
HOSPITAL

612 South Sibley Avenue
Litchfield, MN 55355

320.693.3242

www.meekermemorial.org

Meeker Memorial Hospital
612 S. Sibley Ave.
Litchfield, MN 55355
(320) 693-4573
Meekermemorial.org



Best Practices for Care of the Patient Experiencing a Perinatal Loss

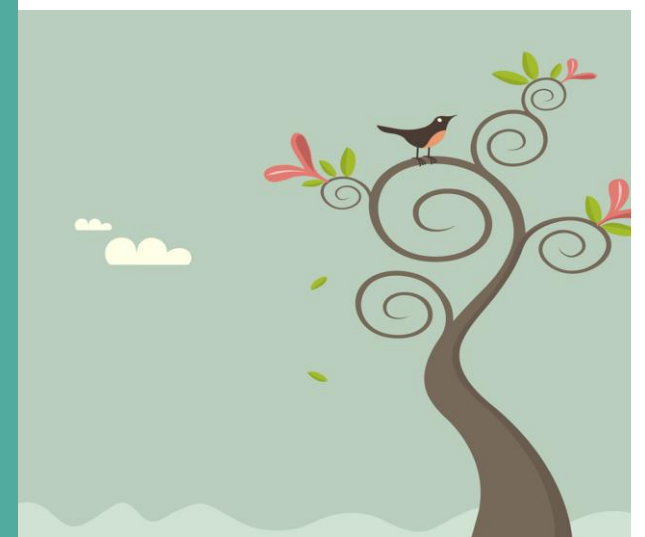
By Candy McVicar, Founder & Executive
Director - Missing GRACE Foundation

Thursday, May 27, 2010

10 a.m. to 12 p.m.

Meeker Memorial Hospital

Conference Center



Program Objectives

Participants will:

- Learn to match their care to the individual needs of the grieving family.
- Have a greater understanding and awareness of the emotional and physical impact of perinatal loss on the patient
- Understand how compassionate care given by the caregiver can leave a lasting impression that will allow for a much better recovery in the grieving process.
- Receive information on area resources, support and Missing GRACE Foundation resources to assist in the recovery process.

This session will allow participants to build an effective system from the hospital to the home, ensuring that exceptional care for parents is provided before, during and after the delivery of a perinatal loss.

Target Audience: Nurses, midwives, social workers, physicians, counsellors, therapists, educators, clergy including chaplains and funeral home personnel.

Participants are awarded 2 contact hours of continuing education upon completion. The activity has been approved by Meeker Memorial Hospital (MMH). However, the participant is responsible for determining whether this activity meets the requirements for acceptable continuing education.

About the Speaker:



Candy McVicar is the Founder and Executive Director of Missing GRACE Foundation which is an International support organization serving to help families on their journey through pregnancy and infant loss, infertility and adoption. She personally experienced tragedy in her life, when her daughter Grace was stillborn. She made a commitment to help others through the grief and pain she had known and to bring about awareness of these issues and thus formed The Missing GRACE Foundation to aid individuals as they Grieve, Restore, Arise, Commemorate and Educate.

She is the the Spokesperson for The Pregnancy Institute and partners with the Institute in helping save lives through their campaign for awareness and prevention of stillbirth.

Candy has captured the hearts and minds of many with her engaging and personable style. She delivers her messages on GRACE, marriage survival, male/female grief, facilitating support groups, and many other topics with a candor and sincerity which people can relate to so well. She has lectured across the country at hospitals, clinics, universities, churches and conferences. She is a frequent guest on, radio, and Internet Web sites, where she continues to advocate for compassionate health care, stillbirth prevention and providing quality resources and support for bereaved, infertile and adoptive families.

Services and Programs

Area resources you will learn about at the program.

- **Infant Loss Support Group**
- **Babyland**
- **Funeral arrangement services**
- **March of Dimes resources**
- **Area grief resources and support**
- **Clothing for perinatal loss**
- **Photography**
- **Memory boxes**

Registration Form

Call (320) 693-4573 to register. Or email information to: Irice@meekermemorial.org

Name:_____

Organization:_____

Title:_____

Address:_____

City:_____State:___Zip:_____

Phone:_____

Email:_____

There is no cost to attend the program. This program is sponsored by Meeker Memorial Hospital & the Pregnancy/Infant Loss Support Group Committee.